



Digital SHOWCASE

Inc. Computing, Media & Games

**NORTHERN
SKILLS**

M C
Middlesbrough
College Group

TTE

Courses

In the Digital Department, we have these courses for students aged 16 to 18:

- Media
- Computing
- Games
- ESports

We have adult courses too, like Access to HE, short part-time courses, and even university-level learning.

Our Unique Selling Points

- Dedicated Digital building
- Industry standard equipment
- Business links and advisory board
- Highly inclusive curriculum
- T-Level Digital lead for Engineering
- Industry specialist lecturers
- High quality education
- Apple education centre



Predicted Grades Form

Please fill in this form with as much detail as you can at the end of this presentation.

Why do I need to fill this in?

So we can help you choose the right course and give you the support you need when you start.

If you miss this step, we might not be able to confirm your place.



Scan the QR code using
your smartphone camera

We also have paper copies of this form if you need one, please just ask!



COMPUTING SHOWCASE

**NORTHERN
SKILLS**

M C
Middlesbrough
College Group

TTE

Entry Requirements

Computing

Level 1	GCSEs at grade 2-1 or above. OR An appropriate Entry Level vocational qualification.
Level 2	GCSEs grade 3 or above in particular English. OR An appropriate Level 1 vocational qualification.
T Level	Four GCSEs at grade 4/5 or above including English and maths. You can't retake GCSE Math or English while doing a T Level

The grades you need are correct at the time of this event. Before you enrol, check the College website to make sure you still meet the grade requirements.

What do we do in Computing?

- Programming
- Networking
- Web Development
- Cyber Security
- Internet of Things
- App Development
- Database Design and Development
- Technical Support
- Network Cabling
- Data Analysis
- Installing Hardware
- Social Media in Business
- IT Service Delivery



Level 2 Digital Technology

What will I study?

Modules such as:

- Setting Up and Configuring Technology Systems
- Exploring Current and Emerging Technologies
- Security Protection and Risk Management
- IT Service Solutions
- Digital Applications Development
- Organisational Uses for Digital Media Systems.

Units	Assessment Method
Set up and Configure Technology System	Course Work
Exploring Current and Emerging Technologies	Course Work
Security Protection and Risk Management	External Exam – On screen test
IT Service Solutions	External Exam – Task set and marked externally
Digital Applications Development	Course Work
Organisational Uses for Digital Media Systems	Course Work

What can I do next?

You can move onto one of the T Level Digital courses.

Example Timetable - Vocational

1 – Core Qualification	2 – GCSE Resits
3 – Work Placement	4 – Thrive Personal Development

	Monday	Tuesday	Wednesday	Thursday	Friday
8am					
9am	2 – GCSE Resits	2 – GCSE Resits	1 – Core Qualification	1 – Core Qualification	
10am	2 – GCSE Resits	2 – GCSE Resits	1 – Core Qualification	1 – Core Qualification	
11am	1 – Core Qualification	1 – Core Qualification	1 – Core Qualification	1 – Core Qualification	
12am	1 – Core Qualification	1 – Core Qualification	1 – Core Qualification	2 – GCSE Resits	
1pm	1 – Core Qualification	4 – Thrive Personal Development	1 – Core Qualification	2 – GCSE Resits	
2pm	1 – Core Qualification	4 – Thrive Personal Development	1 – Core Qualification	2 – GCSE Resits	
3pm	2 – GCSE Resits	2 – GCSE Resits	1 – Core Qualification	2 – GCSE Resits	
4pm	2 – GCSE Resits	2 – GCSE Resits	1 – Core Qualification		
5pm			4 – Thrive Personal Development		
6pm					

T Level

What is a T Level?

T Levels are 2-year courses that teach you job skills.

They're the same as doing 3 A Levels.

Local employers help design them, so you learn what real jobs need. This will help you get a job, go to university, or start an apprenticeship.

You'll spend around 80% of your time in class and 20% at a company placement - each course includes at least 45 days of work experience with a company.

How are T Levels marked?

You'll be assessed through hands-on projects, tasks set by employers, and exams.

T-LEVELS

T Level

Digital Support and Security (IT Tech Support and Cyber Security)

What will I study?

Skills and topics covered:

- Intro into Digital Support
- Problem Solving
- Business Context & Emerging Issues
- Digital Environments
- Security & legislation
- Cyber Security Project
- Data in Computing

Future Careers:

- Support Technician - *Average salary £31,000*
- IT Operations Technician - *Average salary £32,214*

How will I be assessed?

- Year 1: 2 Core Exams and an Employer Set Project
- Year 2: Occupational Specialism Project

T Level

Digital Support and Security (IT Tech Support and Cyber Security)

Year 1		Year 2
Business Context and Culture	Exam A	Mandatory content: <ul style="list-style-type: none">• Applying procedures and controls to maintain the digital security of an organisation and its data• Propose remediation advice for a security risk assessment• Discover, evaluate and apply reliable sources of knowledge.
Diversity and Inclusion		
Learning and Planning		
Digital Support Pathways/Business Support Pathways	Exam B	
Tools and Testing		
Security & Legislation		
Data & Digital Analysis		
ESP – Communicate information clearly, whilst working with stakeholders to clarify requirements. Apply a logical approach to resolving faults and ensuring activities avoid risks to security.		

T Level

Digital Software Development (Programming)

What will I study?

Skills and topics covered:

- Intro into Programming
- Problem Solving
- Business Context & Emerging Issues
- Digital Environments
- Security & legislation
- Software Development Project
- Data in Computing

Future Careers:

- Programmers – *Average Salary £39,940*
- Web Designer – *Average Salary £43,302*

How will I be assessed?

- Year 1: 2 Core Exams and an Employer Set Project
- Year 2: Occupational Specialism Project

T Level

Digital Software Development (Programming)

Year 1	
Problem Solving	Exam 1
Programming	
Emerging Issues & Impact of IT	
Legislation & Regulatory Requirements	
Business Environment	Exam 2
Data	
Digital Environment	
Security	
Employer Set Project - Be able to use project planning tools to apply understanding of project planning in response to a scenario	

Year 2 – Extended Project
Be able to analyse a problem to define requirements and acceptance criteria aligned to user needs
Apply ethical principles and manage risks in line with legal and regulatory requirements when developing software
Design, evaluate and apply reliable sources of knowledge
Design
Create solutions in a social and collaborative environment
Implement a solution using at least two appropriate languages
Test a software solution
Change, maintain and support software

Example Timetable – T Level

1 – Core Qualification	2 – GCSE Resits
3 – Work Placement	4 – Thrive Personal Development

	Monday	Tuesday	Wednesday	Thursday	Friday
8am					
9am	1	1	1	3	3
10am	1	1	1	3	3
11am	1	1	1	3	3
12am			4	3	3
1pm	1	1	1	3	3
2pm	1	1	1	3	3
3pm	1	1	1	3	3
4pm	1	1	1	3	3
5pm					
6pm					

Work Experience

How much work experience will I get?

T Level: at least 315 hours industry placement

BTEC/Level 2: 35 hours

Do I have to organise my own work experience?

To ensure you get the most out of your work experience, our dedicated team will help you find the right work placement that supports your course and your career ambitions. You'll be assigned a dedicated Work Placement Co-ordinator who will visit you and provide support throughout the whole process.

If you have an employer that can provide a work experience placement for you, that's great! When you start let the work placement co-ordinator know so they can help put things in place for you.

What are the benefits of work experience?

- Gain confidence and self-esteem.
- Give you a head start in knowing what type of job you will want to go into after finishing your course.
- Improve your technical skills and further the learning from your college course.
- Be prioritised for future job opportunities and apprenticeship vacancies.
- Boost your UCAS application for university.

Work Experience



Silver Lining Animation



Progression

Full-time Job Service
Delivery Analyst
@Appamondo



Part-time Job EPIM
(Enterprise Product
Information) & Data
Manager @UPEX
Distributors &
continued to do FD
@Middlesbrough
College

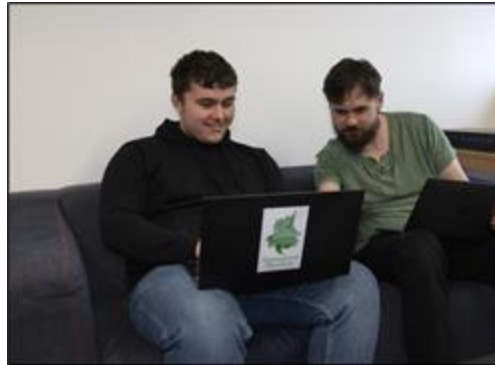


Level 4 Apprenticeship IT
Technician @Nicholas
Postgate Catholic
Academy Trust

Progression



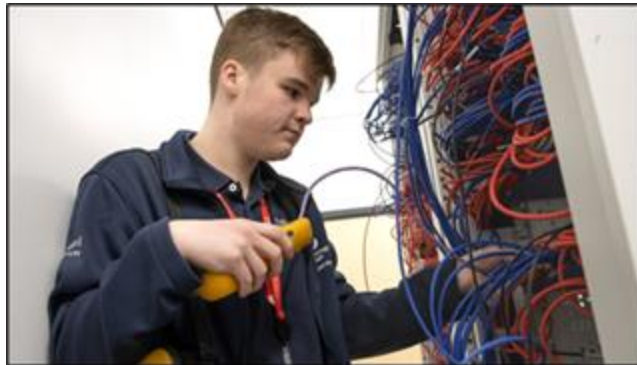
L3 Apprenticeship Security & Compliance analyst
@Middlesbrough College



Software Developer
@Greenlord Studios



Co-founder of CB Social, a Teesside based Digital Marketing Agency
@CBSocial



Level 3 Apprenticeship Network Systems & Security
@Middlesbrough College



Full-time Job Lecturer
@Middlesbrough College



MEDIA SHOWCASE

**NORTHERN
SKILLS**

M C
Middlesbrough
College Group

TTE

Entry Requirements Media

Level 1	GCSEs at grade 2-1 or above. OR An appropriate Entry Level vocational qualification.
Level 2	Four GCSEs grade 3 or above in particular English. OR An appropriate Level 1 vocational qualification.
Level 3	Four GCSEs at grade 4 (C) or above which must include Maths or English. OR Internal progression from Level 2 Creative Media.
T Level	Four GCSEs at grade 4/5 or above including English and maths. OR An appropriate Level 2 vocational qualification & maths and English GCSE grade 4 or above. <i>You can't retake GCSE Math or English while doing a T Level</i>

The grades you need are correct at the time of this event. Before you enrol, check the College website to make sure you still meet the grade requirements.

Courses

In the Digital Department, we have these courses for students aged 16 to 18:

- Media
- Computing
- Digital Technology
- Games
- ESports

We have adult courses too, like Access to HE, short part-time courses, and even university-level learning.

What do we do in Media?

- Video Production
- Photography
- Sounds editing
- Podcasting
- Animation
- Social Media
- Digital Graphics
- Pre-Production



Example of work



Level 1

Creative and Digital

What will I study?

Key media, gaming & computing skills such as:

- Photography
- Digital Graphics
- Spreadsheets
- Digital Marketing
- Sound Production

How will I be assessed?

You'll be assessed through practical coursework.
There are no exams in this course.

What can I do next?

You can move onto the Level 2 Creative Media Production course.

Level 2

Creative Digital Skills (Media)

What will I study?

Modules such as:

- Introducing Media Products and Audiences
- Planning and Producing a Media Product
- Comics and Graphic Novels
- Film and TV Media Products
- Animation Production
- Print Media Production

How will I be assessed?

You'll be assessed through coursework and portfolio production. There is no exams in this course.

What can I do next?

You can move onto one of the Level 3 or T Level Digital courses.

Level 3

Creative Content Production

(Including Film, Photography and Digital Graphics)

What will I study?

Modules such as:

- Filmmaking & Video Editing
- Photography & Visual Storytelling
- Print Production (Zines, Editorials, Children's Books)
- Digital Art & Graphic Design
- Animation
- Podcasting & Sound Editing
- Journalism & Writing for Media
- Presenting Your Work for Audiences

How will I be assessed?

You'll be graded based on a collection of work you create by completing tasks and assignments given by your teachers.

Level 3

Creative Media Production for Business and Marketing

What will I study?

Modules such as:

- Photography for Products and Events
- Video Production for Social Media & Online Ads
- Digital Graphics for Promotion
- Website & Landing Page Design
- Podcasting & Influencer Media Strategies
- Planning and Promoting Events
- Branding, Merchandising & Visual Identity
- Marketing Techniques & Campaign Planning
- Working to a Client Brief

How will I be assessed?

You'll be graded based on a collection of work you create by completing tasks and assignments given by your teachers.

Example Timetable - Vocational

1 – Core Qualification	2 – GCSE Resits
3 – Work Placement	4 – Thrive Personal Development

	Monday	Tuesday	Wednesday	Thursday	Friday
8am					
9am	2 – GCSE Resits	2 – GCSE Resits	1 – Core Qualification	1 – Core Qualification	
10am	2 – GCSE Resits	2 – GCSE Resits	1 – Core Qualification		
11am	1 – Core Qualification	1 – Core Qualification	1 – Core Qualification	1 – Core Qualification	
12am	1 – Core Qualification		1 – Core Qualification		
1pm	1 – Core Qualification	4 – Thrive Personal Development	1 – Core Qualification		
2pm	1 – Core Qualification	4 – Thrive Personal Development	1 – Core Qualification		
3pm	2 – GCSE Resits	2 – GCSE Resits	1 – Core Qualification		
4pm	2 – GCSE Resits	2 – GCSE Resits	1 – Core Qualification		
5pm			4 – Thrive Personal Development		
6pm					

T Level

What is a T Level?

T Levels are 2-year courses that teach you job skills.

They're the same as doing 3 A Levels.

Local employers help design them, so you learn what real jobs need. This will help you get a job, go to university, or start an apprenticeship.

You'll spend around 80% of your time in class and 20% at a company placement - each course includes at least 45 days of work experience with a company.

How are T Levels marked?

You'll be assessed through hands-on projects, tasks set by employers, and exams.

T-LEVELS

T Level

Media, Broadcast and Production (Content Creation)

What will I study?

Skills and topics covered:

- The creative economy
- The individual in the creative industries
- Cultural context and vocabulary
- Audience and consumer needs
- Legal and regulatory requirements
- Professional standards and conduct in the workplace
- Equality, diversity and inclusion requirements
- Research skills
- Project methodology and administration
- Continued professional development
- Content creation and production

How will I be assessed?

You will be assessed by 2 written exams and employer-set coursework.

What can I do next?

Future Careers:

- Broadcasting Equipment Operator – *Average Salary £28,080*
- Journalist/Reporter – *Average Salary £32,010*
- Media Director – *Average salary £55,000*
- Production Manager – *Average Salary £38,300*
- Content Writer – *Average Salary £32,000*
- Photographer – *Average Salary £29,601*

University opportunities:

Past students have progressed to study degrees in film production, broadcasting, media studies, photography, animation and journalism.

Example Timetable – T Level

1 – Core Qualification	2 – GCSE Resits
3 – Work Placement	4 – Thrive Personal Development

	Monday	Tuesday	Wednesday	Thursday	Friday	
8am						
9am	1	1	1	3		
10am	1	1	1			
11am	1	1	1			4
12am			4			1
1pm	1	1	1			1
2pm	1	1	1			1
3pm	1	1	1			
4pm	1	1	1			
5pm						
6pm						

Work Experience

Level 2 /Level 3 courses will require a minimum of 30 hours work placement.

T Level course will require 360 hours across the 2 years.

We can help find you a work placement with one of our many company links.



[Silver Lining Animation](#)





GAMES SHOWCASE

**NORTHERN
SKILLS**

M C
Middlesbrough
College Group

TTE

Entry Requirements

Games

Level 1	GCSEs at grade 1-2 or above. OR An appropriate Entry Level vocational qualification.
Level 2	GCSEs grade 3 or above OR An appropriate Level 1 vocational qualification.
Level 3 ESport	Four GCSEs at grade 4/5 or above including English and maths at grade 4 or above.
Level 3 Games Design & Development	Five GCSEs at grade 4/5 (C) or above.

The grades you need are correct at the time of this event. Before you enrol, check the College website to make sure you still meet the grade requirements.

Courses

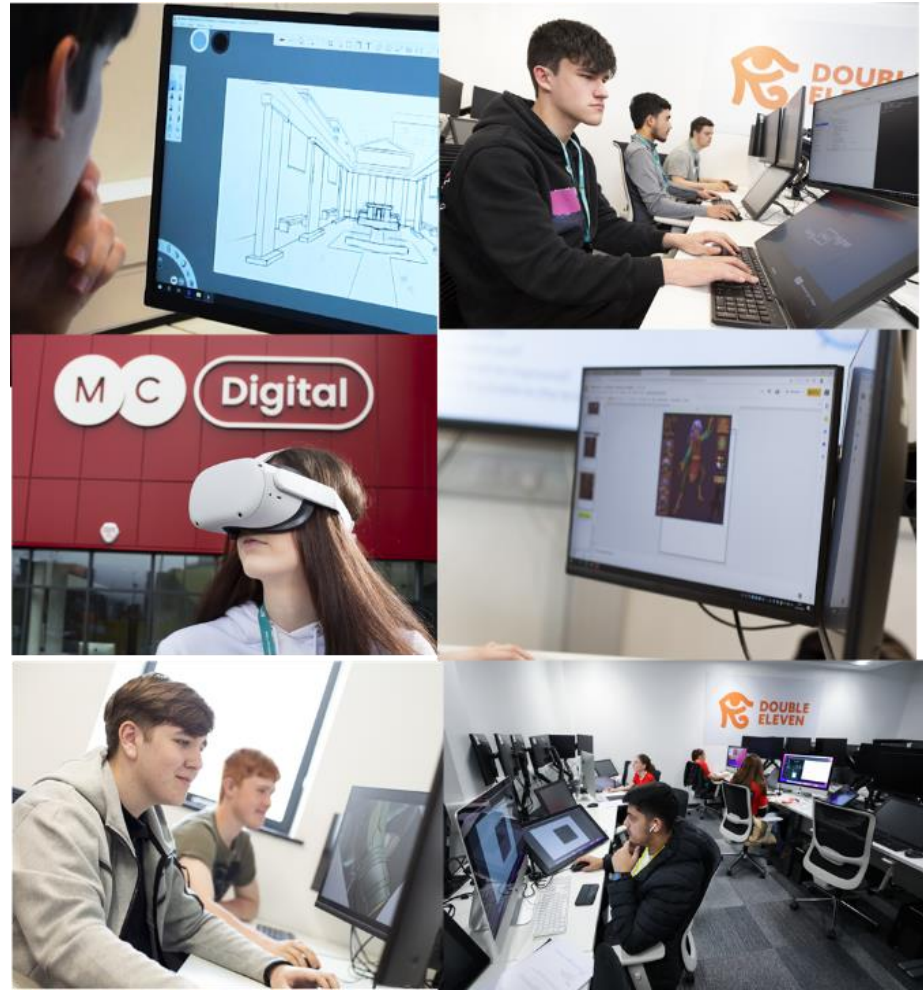
In the Digital Department, we have these courses for students aged 16 to 18:

- Media
- Computing
- Digital Technology
- Games
- ESports

We have adult courses too, like Access to HE, short part-time courses, and even university-level learning.

What do we do in Games?

- Animation
- VFX
- 2D Sprite Design
- Virtual Reality
- 3D Modelling
- Character Design
- Digital Graphics
- Concept Art
- Games Programming



Example of Games student work



Level 1

Creative and Digital

What will I study?

Key media, gaming & computing skills such as:

- Photography
- Digital Graphics
- Spreadsheets
- Digital Marketing
- Sound Production

How will I be assessed?

You'll be assessed through practical coursework.
There are no exams in this course.

What can I do next?

You can move onto the Level 2 Creative Media Production course.

Level 2

Esports and Game Development

What will I study?

Modules such as:

- Esports Games, Teams and Tournaments
- Establishing an Esports Organisation
- Streaming for Esports
- Plan for an Esports Event
- Start an Enterprise in Esport
- Design an Esports Game
- Positive Health and Well-being in Esports

How will I be assessed?

You will be assessed through a series of assignments, projects and one exam.

What can I do next?

You can move onto the Level 3 Esports and Games Development course

Level 3

Esports and Game Development

What will I study?

Modules such as:

- Introduction to Esports
- Esports Skills
- Games Design
- Computer Networking
- Video and Sound Production

What can I do next?

This course helps you get ready for jobs in esports. You can also study it with other courses like A Levels or BTECs in IT, Media, Sport, or Business.

How will I be assessed?

You will be assessed through exams, a development portfolio, written assignments, a synoptic project and a research project.



Level 3

Games Design and Development

What will I study?

Modules such as:

- 3D Creative tools and modelling
- Art Fundamentals
- VFX Fundamentals
- Games design and concepts
- Game Engines

What can I do next?

Career opportunities include:

- Games development
- Games design
- Platform development
- Multimedia programmer

How will I be assessed?

You will be assessed through exams, a development portfolio, written assignments, a synoptic project and a research project.

Example Timetable - Vocational

1 – Core Qualification	2 – GCSE Resits
3 – Work Placement	4 – Thrive Personal Development

	Monday	Tuesday	Wednesday	Thursday	Friday
8am					
9am	2 – GCSE Resits	2 – GCSE Resits	1 – Core Qualification	1 – Core Qualification	
10am	2 – GCSE Resits	2 – GCSE Resits	1 – Core Qualification		
11am	1 – Core Qualification	1 – Core Qualification	1 – Core Qualification	1 – Core Qualification	
12am	1 – Core Qualification		1 – Core Qualification		
1pm	1 – Core Qualification	4 – Thrive Personal Development	1 – Core Qualification		
2pm	1 – Core Qualification	4 – Thrive Personal Development	1 – Core Qualification		
3pm	2 – GCSE Resits	2 – GCSE Resits	1 – Core Qualification		
4pm	2 – GCSE Resits	2 – GCSE Resits	1 – Core Qualification		
5pm			4 – Thrive Personal Development		
6pm					

Work Experience

Level 2 /Level 3 courses will require a minimum of 30 hours work placement.

T Level course will require 360 hours across the 2 years.

We can help find you a work placement with one of our many company links.



[Silver Lining Animation](#)

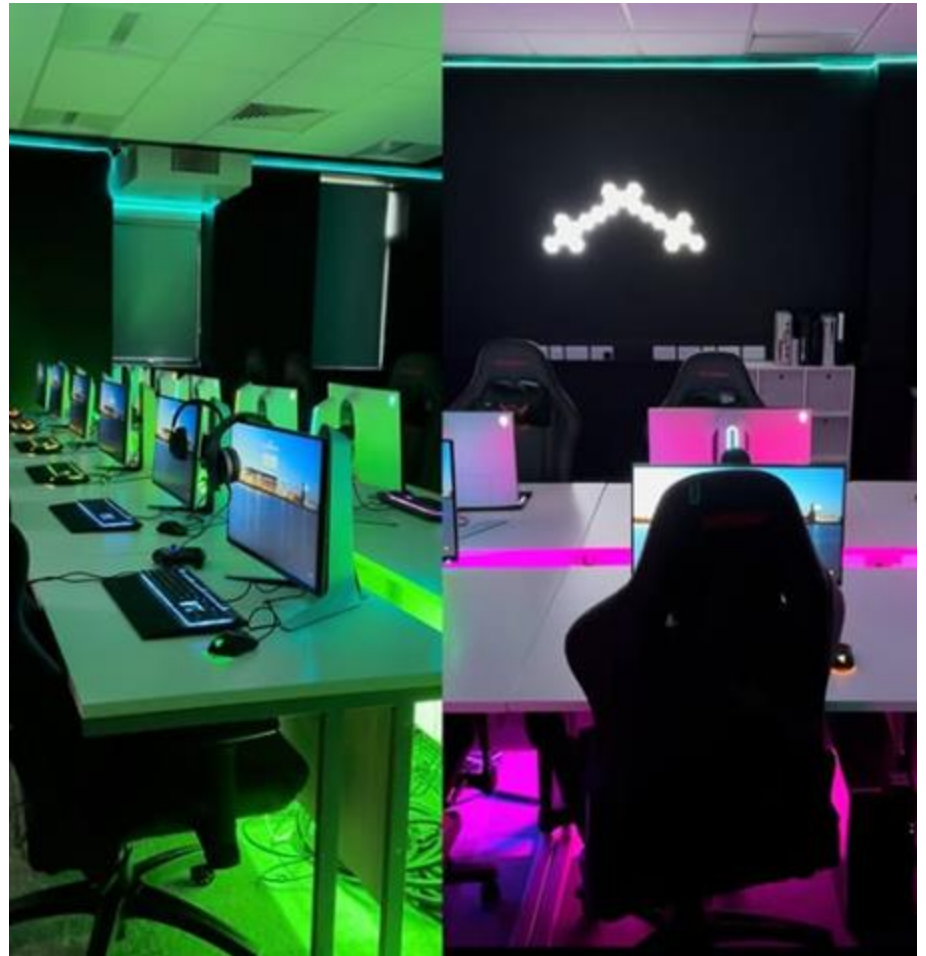


Our ESports Room

We've just opened a new Esports room packed with high-tech Alienware PCs, cool gaming chairs, and loads of popular games!

🏆 Join our teams in Overwatch, Valorant, Fortnite, and Rocket League – and get ready for sim racing coming soon! You could even compete in national tournaments.

📱 Follow [@mcdigitalesports](https://twitter.com/mcdigitalesports) to see all the action!



Enrichment



- Trips
- Social Actions
- e-Sports
- Community Projects
- Games Jam
- Film Festivals
- World Skills
- Competitions

STUDENT PERKS

Travel



Bus

Shuttle bus

Train



£15 printing credit and subsidised stationery costs



FREE Wi-Fi



10% discount on great food



20% discount on hair and beauty treatments, plus a free haircut in your first term!



College gym membership for just a one-off £10 fee!



FREE* college meals
**If you currently receive free school meals, this could continue at college.*

Financial Help



Next Steps



Conditional Offer

Your place is conditional, which means you need to:

- Get the grades you need for your chosen course/subjects.
- Keep an eye on our website for any important updates.
- Make sure you get approval from our Learning Support or Safeguarding teams before enrolling if needed.
- Finish the full enrolment process during Main Enrolment – see enrolment slide for details
- Places on your course being available.

Even if you've got an offer, your place on the course isn't confirmed until you enrol.

Additional Learning Support

Our friendly teams can help you with your learning.

If you have declared an EHCP:

We might pause your application while The SEN Team speak to the Local Authority to check your plan.

We may also contact you to book an appointment with one of our ALS team leaders.

Do you have SEN support at school?

Ask your school SENCo to share it with us so we can plan the right support for you.

The Cube Team will help you with things like exam support, dyslexia checks, tutoring, and study skills.

For any support queries, contact: sen@mbro.ac.uk

Enrolment

GCSE Results Day

It's important that you go to your school and collect your GCSE results on **Thursday 20th August**.

We need the paper copy of your results to do your enrolment. If you don't bring it, we won't be able to sign you up for your course.

Enrolment Information

Enrolment will take place from **Thursday 20th to Friday 28th August** (excluding the weekend and August bank holiday).

Enrolment is by **appointment only** and you'll get a set time for your enrolment in the summer. Try to come at the date and time we give you - this is your **priority** appointment, and it gives you the best chance of getting a place on your first-choice course/subject(s).

If you wait too long or go on holiday during enrolment, your course might fill up - and we might not be able to save your place.

AIM HIGHER WITH OUR **SPORTS ACADEMIES**

Are you as passionate about sport as you are about your studies?

Whether your passion lies on the pitch or in the pool, take your skills to the next level with a Sports Academy at Middlesbrough College!



Sports Academies:

- \ Basketball**
- \ Cricket**
- \ Pro 16 Men's Football**
- \ Women's Football**
- \ Golf**
- \ Gymnastics**
- \ Swimming**
- \ Volleyball**

You don't need to be doing a sports course to take part in one of our sports academies!

Middlesbrough College Group is proud to announce an exciting new partnership with Whitby Town Football Club



Middlesbrough College Group

We are Ofsted Good with **Six Outstanding** Features

Behaviour
and attitudes
Outstanding

Personal
development
Outstanding

Leadership
and management
Outstanding

Adult learning
programmes
Outstanding

Apprenticeships
Outstanding

Provision for learners
with high needs
Outstanding

CAREERS AND EXPERIENCE

Careers Team



Our Careers Team is here to help you with:

- › One-to-one careers guidance
- › CV, job and apprenticeship application support
- › University and UCAS application support
- › Employability skills development
- › Grofar – a smart digital tool to plan and track your work placements and enrichment

Work placements Stand out from the crowd!

Real-world experience gives you a real advantage. That's why work placements are a key part of college life.



STUDENT SERVICES



Your wellbeing matters. That's why our Student Services Team is always on hand to support you!

We offer:

- › Free, confidential counselling
- › Dedicated welfare and safeguarding officers

Additional Learning Support



Our specialist services include:

- › Dyslexia / Dyscalculia Support Tutors
- › Extra maths and English support
- › Communication Support Workers for the deaf and notetakers
- › IT trainers for the visually impaired
- › Specialist Learning Support Assistants
- › Assistive technology and software resources
- › Special exam arrangements

YOUR CAMPUS



Construction Yard



LRC

Fitness Studio



MC Theatre

Waterside Brasserie



Sports Hall and
Astroturf pitches

Airplane
Mock Fuselage



Hair and Beauty
Salons

Campus Heart



Health and Care Ward

Recording Studios



MODERN FACILITIES

We are always developing our campus and facilities to support the growth of skills in the Tees Valley.



Electric and Hybrid Motor Vehicle Workshop



State-of-the-art Clinical and Community Care Simulation Suite for Health & Care programmes



Brand-new Esports room



Specialised Welding equipment to meet industry needs



7 classrooms and workspaces for Construction, Engineering and TTE



State-of-the-art £12m Engineering Technical Training Centre

**YOU DON'T HAVE TO GO FAR
TO GO FURTHER!**



At University Centre Middlesbrough you'll find:

- › Career-focused degrees designed in collaboration with employers
- › The chance to gain professional qualifications alongside your degree
- › Smaller class sizes and more one-to-one support
- › A supportive, close-knit community where you're known by name
- › More teaching hours than traditional universities

**Stay local,
go higher,
and get
career-ready
with UCM!**



NORTH EAST
INSTITUTE OF
TECHNOLOGY

LAUNCH YOUR CAREER WITH AN APPRENTICESHIP



NORTHERN SKILLS

APPRENTICESHIP & TRAINING ARM OF
MIDDLESBROUGH COLLEGE GROUP

We are proud to introduce Northern Skills, Middlesbrough College's apprenticeship and training company!

Apprenticeship benefits:

- › Earn whilst you learn! Work alongside your studies and earn a wage
- › Treated with respect and like an adult
- › Receive hands-on-training under the supervision of skilled professionals
- › Learn job specific skills that employers are looking for now
- › A practical route to learning
- › Avoid University loan debts



Apprenticeships available in:

- › Beauty
- › Business
- › Catering & Hospitality
- › Childcare, Healthcare and Education
- › Construction
- › Engineering & Manufacturing
- › IT, Computing and Digital Technologies
- › Motor Vehicle (Automotive Technology)
- › And many more!



WHY NOT SEE IT FOR YOURSELF?

COME VISIT US!

Come see first-hand what studying at Middlesbrough College and TTE is like! Our open events are the perfect opportunity to chat with tutors, explore our facilities, and ask any questions you may have. You can even apply when you visit us!

2025/26 Open Events

Thu 2nd October '25

5:00pm – 7:30pm

Thu 4th December '25

5:00pm – 7:00pm

Thu 7th May '26

5:00pm – 7:00pm

Wed 8th October '25

5:00pm – 7:30pm

Wed 21st January '26

5:00pm – 7:00pm

Tues 16th June '26

5:00pm – 7:00pm

Sat 8th November '25

5:00pm – 7:30pm

Wed 11th March '26

5:00pm – 7:00pm

Apprenticeship Expo

Tue 10th February

2:00pm – 6:00pm



@MiddlesbroughCollege



@MiddlesbroughCollege



@MiddlesbroughCollege



WhatsApp

We are on WhatsApp!
07979 111 313