



# CONSTRUCTION SHOWCASE

**NORTHERN  
SKILLS**

**M C**  
Middlesbrough  
College Group

**TTE**

# Predicted Grades Form

Please fill in this form with as much detail as you can at the end of this presentation.

## **Why do I need to fill this in?**

So we can help you choose the right course and give you the support you need when you start.

If you miss this step, we might not be able to confirm your place.

*We also have paper copies of this form if you need one, please just ask!*



Scan the QR code using  
your smartphone camera

# Courses

In the Construction Department, we have these courses for students aged 16 to 18:

- Basic Construction Skills (Multi Skills)
- Brickwork
- Carpentry & Joinery
- Plumbing
- Electrical Installation
- Built Environment/Civil Engineering

We have adult courses too, like Access to HE, short part-time courses, and even university-level learning.

# Entry Requirements

**Basic Construction Skills  
Carpentry & Joinery  
Brickwork**

<b>Entry level 3</b>	You need an interest in construction, but no formal qualifications required
<b>Level 1</b>	GCSEs at grade 2-1 or above OR An appropriate Entry Level vocational qualification
<b>Level 2</b>	Level 2 Wood Occupation only Four GCSEs at grade 4 or above, including English language, maths and science
<b>Level 3</b>	Progression route from your Level 2 course

The grades you need are correct at the time of this event. Before you enrol, check the College website to make sure you still meet the grade requirements.

# Basic Construction Skills

Entry Level 3

## What will I study?

Modules will include:

- Construction Trade Occupations
- Painting and Decorating
- Plastering
- Plumbing
- Plumbing
- Bricklaying
- Tiling
- Carpentry
- Electrical

## How will I be assessed?

You will complete an assessment workbook

## What can I do next?

You can move onto one of our Level 1 Construction trade courses such as Joinery, Plumbing or Brickwork.

# Brickwork

Level 1

## **What will I study?**

Modules may include:

- Health, Safety and Welfare in Construction
- Principles of Building Construction, Information and Communication
- Contribute to Setting Out and Building of Masonry Structures up to Damp Proof Course
- Carrying out Block Laying, Bricklaying and Cavity Walling Activities

## **How will I be assessed?**

You will be assessed through coursework, practical tasks and written exams.

## **What can I do next ?**

You can move onto Level 2 Brickwork course, followed by the Level 3 Brickwork to be fully qualified.

# Carpentry & Joinery

Level 1

## What will I study?

Modules will include:

- Health, Safety and Welfare in Construction
- Principles of Building Construction, Information and Communication
- Maintain and Use Carpentry and Joinery Hand Tools
- Prepare and Use Carpentry and Joinery Portable Power Tools
- Produce Woodworking Joints

## How will I be assessed?

You will be assessed throughout on your practical skills. You will also sit some theory tests and multiple-choice exams.

## What can I do next?

You can progress onto the Level 2 in Site Carpentry, followed by Level 3 Site Carpentry to be fully qualified.

# Carpentry & Joinery

## Level 2 Wood Occupations

### What will I study?

- Health and safety
- Principles of Welfare Health & Safety
- Principles of working in the Construction Industry
- Timber Technology
- Planning & Preparing Architectural Joinery
- Architectural Joinery component Production
- Assembly & finishing of Architectural Joinery Products
- Structural Carpentry
- First Fix Carpentry
- Second fix carpentry
- Circular saw
- Use of Woodworking machinery

### How will I be assessed?

You will be assessed through a multi-choice exam, assessments and practical assignments.

### What can I do next?

Carpenter and Joiner – *Average Salary £29,120*

# Entry Requirements

Plumbing

Electrical Installation

Civil Engineering/Built Environment

<b>Entry level 3</b>	You need an interest in construction, but no formal qualifications required
<b>Level 1</b>	GCSEs at grade 2-1 or above OR An appropriate Entry Level vocational qualification
<b>Level 2</b>	Four GCSEs at grade 4 or above, including English language, maths and science OR An appropriate Level 1 vocational qualification
<b>T Level</b>	Four GCSEs at grade 4 or above, including English language, maths and science <b>You can't retake GCSE Math or English while doing a T Level</b>

The grades you need are correct at the time of this event. Before you enrol, check the College website to make sure you still meet the grade requirements.

# Plumbing

## Level 1

### What will I study?

- Health and Safety in Construction
- Constructing PVC Wiring Systems
- Laying Underground Domestic Drainage
- Removing and Refitting Water-Filled Radiators
- Common Plumbing Processes
- Tools, Equipment and Materials
- Bending and Jointing Copper Pipes
- Constructing PVC Wiring Systems
- Installing One Way Lighting Circuits

### How will I be assessed?

A mixture of written exams and observations of practical tasks in the workshop

### What can I do next?

You can move onto the Level 2 Diploma in Plumbing, followed by Level 3 Diploma in Plumbing.

An apprenticeship - if employment is gained with any plumbing employer.

# Electrical Installation

Level 2

## **What will I study?**

Modules will include:

- Health and Safety in the Building Services Engineering.
- Principles of Electrical Science
- Electrical Installation Technology
- Installation of Wiring Systems and Enclosures

## **How will I be assessed?**

Theoretical examinations and a summative practical assessment.

## **What can I do next?**

You can progress onto our T Level Building Servicesd Engineering (Electrotechnical) course.

# T Level

## What is a T Level?

T Levels are 2-year courses that teach you job skills.

They're the same as doing 3 A Levels.

Local employers help design them, so you learn what real jobs need. This will help you get a job, go to university, or start an apprenticeship.

You'll spend around 80% of your time in class and 20% at a company placement - each course includes at least 45 days of work experience with a company.

## How are T Levels marked?

You'll be assessed through hands-on projects, tasks set by employers, and exams.

**T-LEVELS**

# T Level

## Building Services Engineering

### What will I study?

- Health and safety
- The science behind building design, surveying and planning
- Making accurate and appropriate measurements
- Construction methods
- Building regulations and standards
- Data management and information standards in construction
- Relationship management and customer service
- How the Internet of Things impacts construction
- Digital engineering techniques
- Maintenance principles
- Mathematical techniques to solve construction problems
- Construction design principles and processes
- The construction industry and its role in the economy
- Sustainability and the environmental impact of construction
- Business, commerce and corporate social responsibility
- Building technology principles
- Building services engineering systems
- Tools, equipment and materials

# T Level

## Building Services Engineering

### How does the T Level work?

In Year 1 of your T Level, you will complete all of the same modules within the 'Building Services Engineering' section.

In Year 2, the two learning paths will separate so you can focus on your chosen pathway. These pathways are called 'Occupational Specialism Areas'. This is when you'll start learning more hands-on skills for the path you picked.

Plumbing:

#### **Future Careers:**

Plumber

*Average Salary £34,180*

Air-conditioning installers

*Average Salary £36,470*

Electrical Installation:

#### **Future Careers:**

Electrician

*Average Salary £30,370*

Electrical Trades

*Average Salary £31,900*

# T Level

## Design, Surveying and Planning for Construction

### What will I study?

Modules include:

- Health and Safety
- Science & Measurement
- Building Technology
- Mathematical Techniques
- Relationship management
- Commercial business
- Design, Construction and the Built Environment Industry
- Sustainability
- Project Management
- Law
- Information and Data
- Digital Technology

### Pathways:

Civil Engineering

Built Environment (Surveying)

### Future Careers:

Civil Engineer

*Average Salary £35,690*

### Future Careers:

Quantity Surveyor

*Average Salary £42,080*

Structural Engineer

*Average Salary £43,0928*

Architect

*Average Salary £41,560*

# Example Timetable - Vocational

1 – Core Qualification	2 – GCSE Resits
3 – Work Placement	4 – Thrive Personal Development

	Monday	Tuesday	Wednesday	Thursday	Friday
8am					
9am	2 – GCSE Resits	2 – GCSE Resits	1 – Core Qualification	1 – Core Qualification	
10am	2 – GCSE Resits	2 – GCSE Resits	1 – Core Qualification		
11am	1 – Core Qualification	1 – Core Qualification	1 – Core Qualification	1 – Core Qualification	
12am	1 – Core Qualification		1 – Core Qualification		
1pm	1 – Core Qualification	4 – Thrive Personal Development	1 – Core Qualification		
2pm	1 – Core Qualification	4 – Thrive Personal Development	1 – Core Qualification		
3pm	2 – GCSE Resits	2 – GCSE Resits	1 – Core Qualification		
4pm	2 – GCSE Resits	2 – GCSE Resits	1 – Core Qualification		
5pm			4 – Thrive Personal Development		
6pm					

# Example Timetable – T Level

1 – Core Qualification	2 – GCSE Resits
3 – Work Placement	4 – Thrive Personal Development

	Monday	Tuesday	Wednesday	Thursday	Friday	
8am						
9am	1	1	1	3		
10am	1	1	1			
11am	1	1	1			4
12am			4			1
1pm	1	1	1			1
2pm	1	1	1			1
3pm	1	1	1			
4pm						
5pm						
6pm						

# Uniform, kits & PPE

We will give you PPE (Personal Protection Equipment) – This will be **free**

We order your PPE at enrolment, and it will be available before your first workshop session.

## **PPE may include:**

- Trousers
- Polo shirt  
(Each area will wear a specific colour to identify their course)
- Steel toe cap work boots
- Goggles
- Hard hat
- Light eye protection

YOU **MUST** WEAR YOUR PPE **AT ALL TIMES DURING WORKSHOP SESSIONS**

PPE IS **YOUR** RESPONSIBILITY – YOU MUST ENSURE YOU BRING YOUR PPE TO **EVERY** SESSION AND LOOK AFTER IT ALL YEAR

# STUDENT PERKS

## Travel



Bus

Shuttle bus

Train



£15 printing credit and subsidised stationery costs



FREE Wi-Fi



10% discount on great food



20% discount on hair and beauty treatments, plus a free haircut in your first term!



College gym membership for just a one-off £10 fee!



FREE\* college meals  
*\*if you currently receive free school meals, this could continue at college.*

## Financial Help



# Next Steps



## Conditional Offer

Your place is conditional, which means you need to:

- Get the grades you need for your chosen course/subjects.
- Keep an eye on our website for any important updates.
- Make sure you get approval from our Learning Support or Safeguarding teams before enrolling if needed.
- Finish the full enrolment process during Main Enrolment – see enrolment slide for details
- Places on your course being available.

Even if you've got an offer, your place on the course isn't confirmed until you enrol.

# Additional Learning Support

Our friendly teams can help you with your learning.

## **If you have declared an EHCP:**

We might pause your application while The SEN Team speak to the Local Authority to check your plan.

We may also contact you to book an appointment with one of our ALS team leaders.

## **Do you have SEN support at school?**

Ask your school SENCo to share it with us so we can plan the right support for you.

The Cube Team will help you with things like exam support, dyslexia checks, tutoring, and study skills.

For any support queries, contact: [sen@mbro.ac.uk](mailto:sen@mbro.ac.uk)

# Enrolment

## GCSE Results Day

It's important that you go to your school and collect your GCSE results on **Thursday 20th August**.

We need the paper copy of your results to do your enrolment. If you don't bring it, we won't be able to sign you up for your course.

## Enrolment Information

Enrolment will take place from **Thursday 20th to Friday 28th August** (excluding the weekend and August bank holiday).

Enrolment is by **appointment only** and you'll get a set time for your enrolment in the summer. Try to come at the date and time we give you - this is your **priority** appointment, and it gives you the best chance of getting a place on your first-choice course/subject(s).

If you wait too long or go on holiday during enrolment, your course might fill up - and we might not be able to save your place.

# AIM HIGHER WITH OUR **SPORTS ACADEMIES**

**Are you as passionate about sport as you are about your studies?**

Whether your passion lies on the pitch or in the pool, take your skills to the next level with a Sports Academy at Middlesbrough College!



## **Sports Academies:**

- \ Basketball**
- \ Cricket**
- \ Pro 16 Men's Football**
- \ Women's Football**
- \ Golf**
- \ Gymnastics**
- \ Swimming**
- \ Volleyball**

**You don't need to be doing a sports course to take part in one of our sports academies!**

**Middlesbrough College Group is proud to announce an exciting new partnership with Whitby Town Football Club**



# Middlesbrough College Group

## We are Ofsted Good with **Six Outstanding** Features

Behaviour  
and attitudes  
**Outstanding**

Personal  
development  
**Outstanding**

Leadership  
and management  
**Outstanding**

Adult learning  
programmes  
**Outstanding**

Apprenticeships  
**Outstanding**

Provision for learners  
with high needs  
**Outstanding**

# CAREERS AND EXPERIENCE

## Careers Team



**Our Careers Team is here to help you with:**

- › One-to-one careers guidance
- › CV, job and apprenticeship application support
- › University and UCAS application support
- › Employability skills development
- › Grofar – a smart digital tool to plan and track your work placements and enrichment

## Work placements Stand out from the crowd!

Real-world experience gives you a real advantage. That's why work placements are a key part of college life.



# STUDENT SERVICES



Your wellbeing matters. That's why our Student Services Team is always on hand to support you!

**We offer:**

- › Free, confidential counselling
- › Dedicated welfare and safeguarding officers

## Additional Learning Support



**Our specialist services include:**

- › Dyslexia / Dyscalculia Support Tutors
- › Extra maths and English support
- › Communication Support Workers for the deaf and notetakers
- › IT trainers for the visually impaired
- › Specialist Learning Support Assistants
- › Assistive technology and software resources
- › Special exam arrangements

# YOUR CAMPUS



Construction Yard



LRC

Fitness Studio



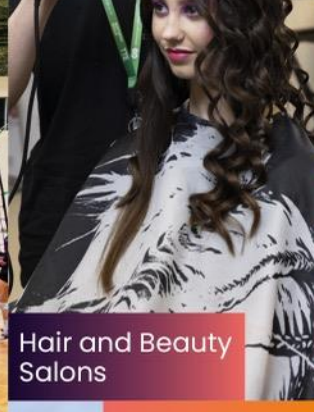
MC Theatre

Waterside Brasserie



Sports Hall and  
Astroturf pitches

Airplane  
Mock Fuselage



Hair and Beauty  
Salons

Campus Heart



Health and Care Ward

Recording Studios



# MODERN FACILITIES

We are always developing our campus and facilities to support the growth of skills in the Tees Valley.



**Electric and Hybrid Motor Vehicle Workshop**



**State-of-the-art Clinical and Community Care Simulation Suite for Health & Care programmes**



**Brand-new Esports room**



**Specialised Welding equipment to meet industry needs**



**7 classrooms and workspaces for Construction, Engineering and TTE**



**State-of-the-art £12m Engineering Technical Training Centre**

**YOU DON'T HAVE TO GO FAR  
TO GO FURTHER!**



**At University Centre Middlesbrough you'll find:**

- › Career-focused degrees designed in collaboration with employers
- › The chance to gain professional qualifications alongside your degree
- › Smaller class sizes and more one-to-one support
- › A supportive, close-knit community where you're known by name
- › More teaching hours than traditional universities

**Stay local,  
go higher,  
and get  
career-ready  
with UCM!**



NORTH EAST  
INSTITUTE OF  
TECHNOLOGY

# LAUNCH YOUR CAREER WITH AN APPRENTICESHIP



**NORTHERN SKILLS**

APPRENTICESHIP & TRAINING ARM OF MIDDLESBROUGH COLLEGE GROUP

**We are proud to introduce Northern Skills, Middlesbrough College's apprenticeship and training company!**

## Apprenticeship benefits:

- › Earn whilst you learn! Work alongside your studies and earn a wage
- › Treated with respect and like an adult
- › Receive hands-on-training under the supervision of skilled professionals
- › Learn job specific skills that employers are looking for now
- › A practical route to learning
- › Avoid University loan debts



## Apprenticeships available in:

- › Beauty
- › Business
- › Catering & Hospitality
- › Childcare, Healthcare and Education
- › Construction
- › Engineering & Manufacturing
- › IT, Computing and Digital Technologies
- › Motor Vehicle (Automotive Technology)
- › And many more!



# WHY NOT SEE IT FOR YOURSELF?

# COME VISIT US!

Come see first-hand what studying at Middlesbrough College and TTE is like! Our open events are the perfect opportunity to chat with tutors, explore our facilities, and ask any questions you may have. You can even apply when you visit us!

## 2025/26 Open Events

**Thu 2nd October '25**

5:00pm – 7:30pm

**Thu 4th December '25**

5:00pm – 7:00pm

**Thu 7th May '26**

5:00pm – 7:00pm

**Wed 8th October '25**

5:00pm – 7:30pm

**Wed 21st January '26**

5:00pm – 7:00pm

**Tues 16th June '26**

5:00pm – 7:00pm

**Sat 8th November '25**

5:00pm – 7:30pm

**Wed 11th March '26**

5:00pm – 7:00pm

**Apprenticeship Expo**

Tue 10th February

2:00pm – 6:00pm



@MiddlesbroughCollege



@MiddlesbroughCollege



@MiddlesbroughCollege



We are on WhatsApp!  
07979 111 313