



Health and Social Care Showcase



Courses

Within the Health and Social Care Directorate we offer the following courses for students who are 16–18 years old:

- Level 1 Exploring Health and Social Care
- Level 2 Health and Social Care Studies
- Level 3 Extended Diploma in Health and Social Care
- Level 3 Care Connect
- T Level in Health – Level 3

We also offer part time, Access to HE, Retrain and Higher Education courses within Health and Social Care for adults.

Please note: Due to a recent government review of qualifications, the list of available courses for the academic year starting in September 2025 may not be finalized until December 2024.

We'll provide updates as soon as the review is complete and course offerings for 2025 and beyond are confirmed.

Entry Requirements

All courses within Health and Social Care directorate require a satisfactory Enhanced Disclosure and Barring Service (DBS check).

Entry level 3	
Level 1	Three GCSEs at grades 1-3
Level 2	An appropriate Level 1 vocational qualification and/or 4 GCSEs at grade 4-2
Level 3	Five GCSEs at grades 4-9, including English and maths
T Level	A minimum of five GCSEs at grade 4-9 or above including English language, maths and science

Please note: Entry requirements are correct at time of this showcase but may be subject to change. Please refer to the College website to check the entry requirements prior to enrolment.

Level 1

Courses:

Exploring Health and Social Care

What will I study?

Modules may include:

- Protection and Safeguarding
- Health and Safety
- Healthy Eating and Drinking
- Mental Health
- Human Growth and Development
- Person-centred Support

What can I do next?

After successfully completing the level 1 programme, students can progress onto a Level 2 course.

Level 2

Courses:

Health and Social Care Studies

What will I study?

Modules include:

- Human Growth and Development
- Equality and Diversity within Health and Social Care
- Effective Communication in Health and Social Care
- Nutrition, Health and Well-being

What can I do next?

After successfully completing the level 2 programme, students can progress onto a Level 3 course.

Level 3

Courses:

Extended Diploma in Health and Social Care

What will I study?

Modules may include:

- Human Lifespan Development
- Anatomy and Physiology
- Current Research in Health and Social Care
- Promoting Public Health
- Infection Prevention and Control

Future Careers:

Clinical Nurse

Average Salary £45,051

Registered Midwife

Average Salary £50.000

Radiographer

Average Salary £39,000

Mental Health Service Lead

Average Salary £50,000

T Level

Courses:

T Level – Health
(Supporting Adult Nursing)

Future Careers

Paramedic

Average Salary £41,881

Social Worker

Average Salary £37,598

What will I study?

Modules may include:

- Managing Information and Data
- Principles of Good Scientific and Clinical Practice
- Understanding the Healthcare Sector
- Further Knowledge of Human Anatomy and Physiology
- Infection Prevention and Control

Occupational Therapist

Average Salary £31,425

Medical Technician

Average Salary £24,903

T Level

What is a T Level?

A T Level is a 2-year, Level 3 Technical qualification which is equivalent to 3 A Levels.

Our T Level courses have been developed in collaboration with employers and businesses to meet the needs of industry and prepare you for work. They provide you with the skills, knowledge and experience you need to open the door to highly skilled employment, higher level study or an apprenticeship.

During your course, you'll spend 80% of your time in the classroom and 20% of your time in the workplace.

Each T Level course includes 45 days of structured industry placement.

How are T Levels assessed?

T Levels are assessed through practical employer-set projects, assignments and examinations.

T-LEVELS

Example Timetable - Vocational

1 – Core Qualification	2 – GCSE Resits
3 – Work Placement	4 – Thrive Personal Development

	Monday	Tuesday	Wednesday	Thursday	Friday
8am					
9am					
10am					
11am					
12am					
1pm					
2pm					
3pm					
4pm					
5pm					
6pm					

Example Timetable – T Level

1 – Core Qualification	2 – GCSE Resits
3 – Work Placement	4 – Thrive Personal Development

	Monday	Tuesday	Wednesday	Thursday	Friday
8am					
9am					
10am					
11am					
12am					
1pm					
2pm					
3pm					
4pm					
5pm					
6pm					

Uniform, kits & PPE

What uniform will I need?

- You will need a uniform for placement, which will be a polo top that the college will provide for you.
- You will also need a DBS check – details of this will be sent out to you with your enrolment slot.

Where can I get this from?

In enrolment you will be able to speak to the placement team to start the DBS process.

In your first week your Personal Tutor will ask you for information regarding sizes.

Will I need the uniform for my first day?

No, don't worry! You won't need it for your first day, as these only need to be worn for your placement.

Health & Social Care Academy

What's included?

Hospital staff entrance and changing room – students will immediately immerse themselves into the hospital environment by preparing for the day in the locker rooms and wearing designated scrubs and uniforms.

Immersive suite – the impressive suite can transform with various settings, from a patient's home, on a high street at night or inside an ambulance.

A&E resus room and 5 bed ward – students can experience working within a ward setting, learning treatments for patients with various ailments.

Clinical suite – the suite provides a space for students to learn the clinical aspects of healthcare.

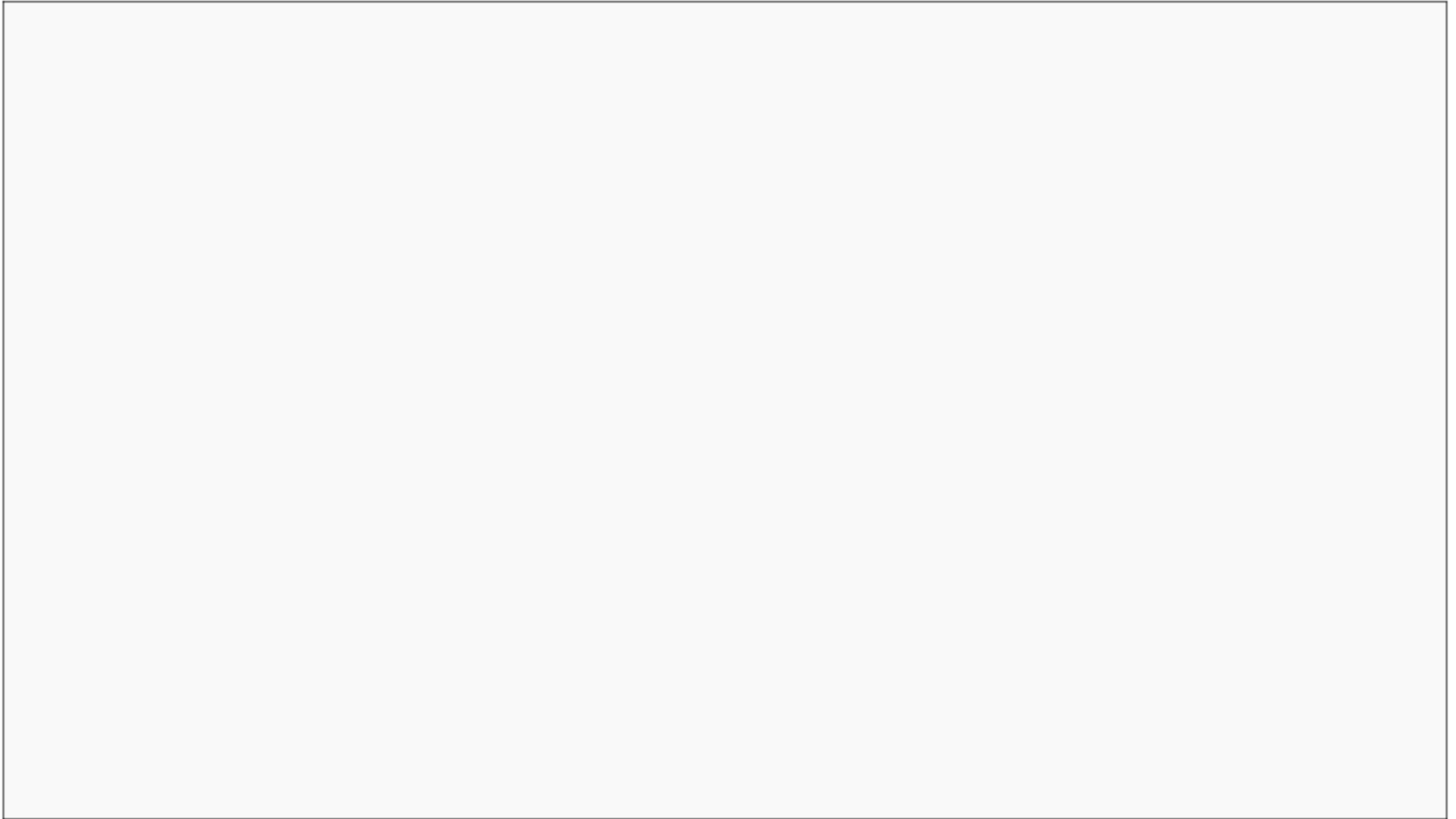
Maternity unit – for aspiring midwives, the maternity unit provides practical experience of a birthing suite and birthing pool area, including a pregnant training manikin and baby.

Community/self-contained flat – the community space can become various settings, including a nursing home, rehab unit, mother and baby unit, or a home that required a risk assessment.

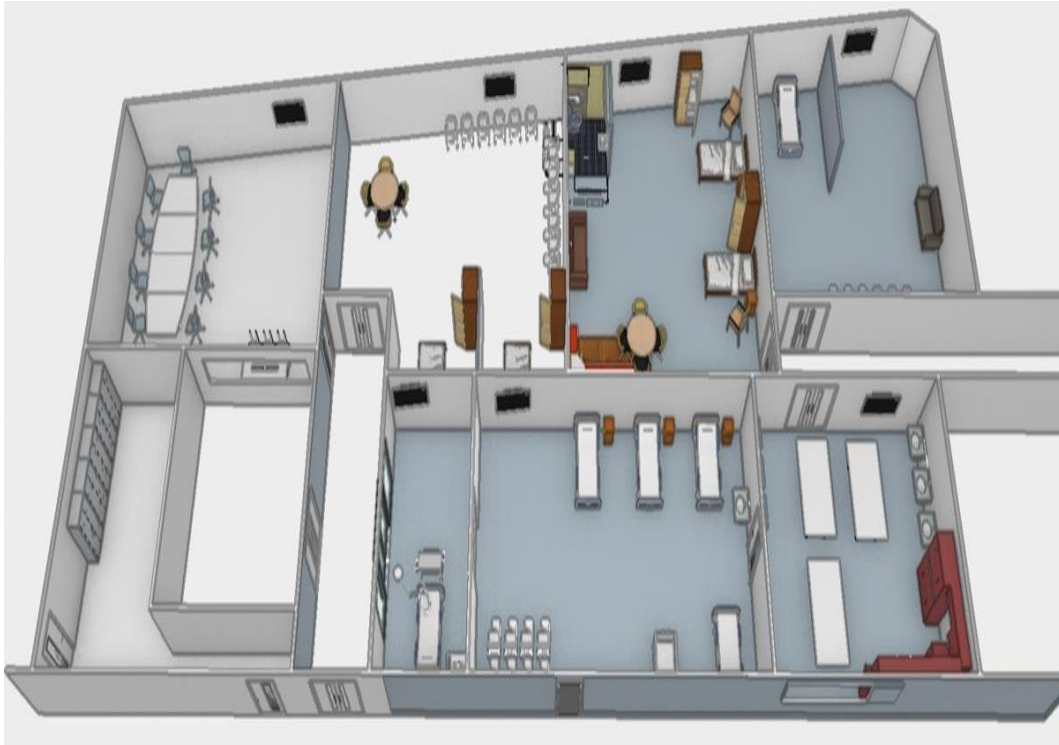
Mental health ward – the mock acute and long-term ward has industry standard anti-ligature equipment used by the NHS, with training from experienced tutors.

Debrief and conference room – students can observe practical sessions with the immersive suite or deliver assessments and feedback within an MDT scenario around the board room.

Health & Social Care Academy



Facilities



Taster Days

Our friendly Admissions team will contact you with details about the Taster Days and how to book your place!

Wednesday 26th February

10:00-12:00 or 13:00-15:00

Friday 27th June

10:00-12:00 or 13:00-15:00

*Please only book onto **one** session for the academic year.

What happens next



Conditional Offers

All offers at Middlesbrough College Group are conditional, subject to:

- Gaining the entry requirements for your chosen course as stated on the College website at point of enrolment
- Completing the full enrolment process in August
- Course places being available at point of enrolment
- Approval from our Additional Learning Support and/or Safeguarding Teams, if required.

Enrolment

From GCSE Results Day (21st August 2025)

Details will be sent to you in the summer which will tell you how and when to enrol and what documents you will need.

We start enrolling from GCSE results day (Thursday 21st August 2025), please ensure you are available to collect your results from your school, to enrol onsite to ensure a place on your course.

Please note if you take holiday during this period and are not able to enrol, we may not be able to guarantee a place on your first-choice course as many of our courses fill up within the first few days of enrolment.

Offer Acceptance

Want to confirm your offer acceptance?

Scan the QR code using your smartphone and complete the online form to confirm your offer acceptance.

Alternatively, you can email 'ACCEPT' to our friendly Admissions Team on admissions@mbro.ac.uk with your full name, date of birth and course name.



AIM HIGHER WITH OUR **SPORTS ACADEMIES**

Are you as passionate about sport as you are about your studies?

Whether your passion lies on the pitch or in the pool, take your skills to the next level with a Sports Academy at Middlesbrough College!

As a top performing College, we are proud to offer specialist top-level coaching, scholarships, and fantastic opportunities to compete in championships and top leagues nationally.

Sports Academies:

- \\ **Basketball**
- \\ **Cricket**
- \\ **Pro 16 Men's Football**
- \\ **Women's Football**
- \\ **Golf**
- \\ **Gymnastics**
- \\ **Rugby**
- \\ **Swimming**
- \\ **Volleyball**

You don't need to be doing a sports course to take part in one of our sports academies!



Middlesbrough College Group

We are Ofsted Good with Six Outstanding Features

Behaviour
and attitudes
Outstanding

Personal
development
Outstanding

Leadership
and management
Outstanding

Adult learning
programmes
Outstanding

Apprenticeships
Outstanding

Provision for learners
with high needs
Outstanding

REMEMBER - Please apply by the end of November to guarantee your place on a course!

Careers Team



Our dedicated Careers Team can help you make the right decisions on your future career path.

The team are here to help you with everything from University applications to CV support.

Work Experience

We are here to get you work ready! We have excellent relationships with local, regional and national employers and we are committed to finding you relevant and quality work experience during your time as a student at Middlesbrough College.

Additional Learning Support

If you have additional needs, we offer a range of support services to help you with:

- Dyslexia
- Dyscalculia
- Maths and English support
- Special exam arrangements
- A range of assistive tools
- and much more

Our student voice

The Student Voice is here to ensure you have the best College experience possible! We listen to your suggestions and concerns and work with the College Management Team to make positive changes.

Ways to get involved:

- Become a class rep
- Student Ambassadors
- Student Union Executive Team
- Student Governors

Additional Learning Support

At Middlesbrough College, the dedicated Additional Learning Support Team is committed to providing comprehensive guidance and assistance to students throughout their educational journeys.

If you have an existing Education Health and Care Plan (EHCP), the college's Special Educational Needs (SEN) Team will proactively liaise with the Local Authority on your behalf to initiate the consultation process. This ensures the EHCP details are properly shared and considered, although your application will be placed on hold temporarily during this period as the necessary steps are taken.

Similarly, if you previously received SEN support at school, the SEN Team encourages you to connect with your school's SENCo to have that information transferred over to Middlesbrough College. This allows the college's four SEN Team Leaders, each assigned to specific curriculum areas, to develop a tailored support plan catered to your individual needs and learning style. Your staff link will be **[NAME]**

The college also has a specialised Cube Team readily available to assist with exam arrangements, dyslexia screenings, academic support services such as tutoring and study skills, and a wealth of other learning resources.

Prospective students and their support networks are strongly advised to reach out to the SEN and/or Cube Teams at the earliest possible stage to ensure a smooth and effective transition into the college. The dedicated staff are committed to going above and beyond to understand your unique circumstances and provide the personalised guidance you need to thrive in your studies.

Your campus

Our vibrant campus has something for everyone. We have a welcoming, friendly community and there are lots of places to study, learn, meet new friends, and get great food.

We are also extremely proud of our innovative industry-standard facilities that give you everything you need to succeed!



Learning Resource Centre



MC Theatre



6 Court Sports Hall and 3G AstroTurf



Hair and Beauty Salons



Health and Care Ward



Recording Studios



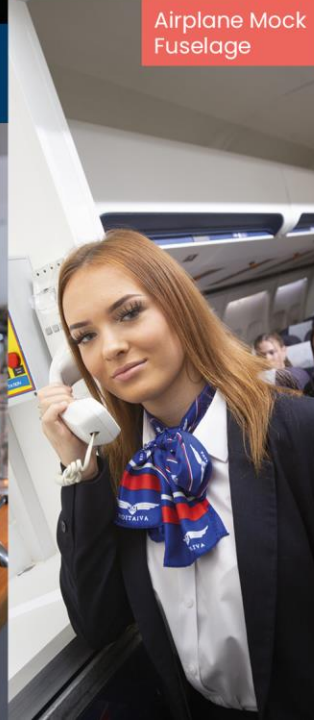
Construction Yard



Fitness Studio



Our Award Winning Training Restaurant, The Waterside Brasserie



Airplane Mock Fuselage



Campus Heart



Recording Studios

University Centre Middlesbrough



Where do you want to go, and who do you want to be?

If you dream of attending University, choose a degree with a difference by continuing your studies at University Centre Middlesbrough.

Our University Centre offers you a practical alternative to the traditional University model where you are able to study University Level qualifications right up to master's level, whilst benefitting from our specialist teaching environments and activities linked to employers and industry.



Study Higher Education with us in the following subjects

- Business Management
- Computing
- Construction & Civil Engineering
- Education & Childcare
- Engineering
- Games Design
- Health, Wellbeing & Social Care
- Hospitality & Culinary Arts
- Media Makeup, Prosthetics & Hair
- Music, Video & Audiovisual Technology
- Social & Community Studies
- Sport & Fitness
- Travel, Tourism & Aviation

New Facilities for 2024/25

We are delighted to be developing our campus and facilities to support the growth of skills in the Tees Valley. Ready for September 2024.



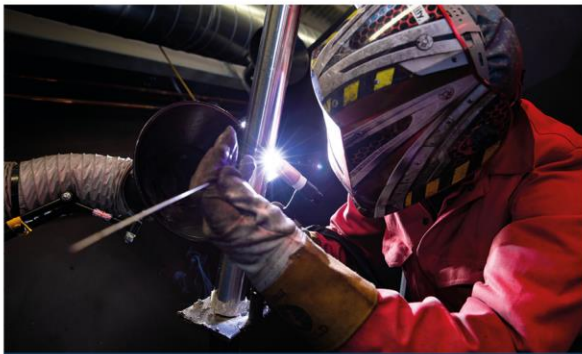
Electric and Hybrid Motor Vehicle Workshop



State-of-the-art Clinical and Community Care Simulation Suite for Health & Care programmes



Range of interactive Health & Care medical equipment



Specialised Welding equipment to meet industry needs



7 new classrooms and works spaces for Construction, Engineering and TTE



New state-of-the-art £12m Engineering Technical Training Centre is now open!

Our student perks

Studying can be expensive, so that's why we give our students the best student perks!

Travel



Travel by Bus

We offer students FREE* weekday bus travel up to 7pm to and from Middlesbrough College

MC Mover

A FREE student shuttle bus to and from Middlesbrough Bus Station direct to Middlesbrough College

Travel by Train

We offer FREE* reimbursed weekday train travel to and from Middlesbrough College

*Free travel for all students eligible for a bursary and £5 admin fee per term for all other students.

Financial help



Students receive help whilst they study with:

- Bursaries
- Support with equipment, costs, and residentials
- Support with childcare
- Other course related costs

Financial help and bursaries are all subject to status and means testing.

Laptop Scheme



MC Click

All full-time students will receive a free loan laptop at enrolment which includes the full Microsoft Office suite.

This will support your learning, equip you with the tools to succeed and help you to develop and showcase your digital skills.



£15 printing credit and subsidised stationery costs



FREE Wi-Fi



Access to exciting enrichment activities



10% discount on great food



FREE College meals[◊]

◊(if you currently receive free school meals, this could continue at College)

Please see our website for more details.



20% discount on hair and beauty treatments, plus a free haircut in your first term!



Support towards kit and equipment



College gym membership for just a one-off £10 fee!

Taking our apprentices higher!



**NORTHERN
SKILLS**

APPRENTICESHIP & TRAINING ARM OF
MIDDLESBROUGH COLLEGE GROUP

We are proud to introduce Northern Skills, Middlesbrough College's apprenticeship and training company!

How to apply for your apprenticeship

You can apply for your apprenticeship vacancy through Middlesbrough College! Our team can support you with your application. Apprenticeships are competitive, so you will need to ace your application and prepare for your interview, so you stand out from other applicants!

Visit northernskills.co.uk and apply for a vacancy.

Apprenticeship benefits:

- Earn whilst you learn! Work alongside your studies and earn a wage
- Treated with respect and like an adult
- Receive hands-on-training under the supervision of skilled professionals
- Learn job specific skills that employers are looking for now
- A practical route to learning
- Avoid University loan debts

Apprenticeships available in:

- Beauty
- Business
- Catering & Hospitality
- Childcare, Healthcare and Education
- Construction
- Engineering & Manufacturing
- IT, Computing and Digital Technologies
- Motor Vehicle (Automotive Technology)
- And many more!



Nell McPartlin
Digital Marketing apprentice
Previous School: Dyke House Sixth Form

Nell chose to study an apprenticeship as she was also eager to work in a professional environment where she could gain vital skills for the future while earning a Level 3 qualification.



@MiddlesbroughCollege



@MiddlesbroughCollege



@MbroCollege



@MiddlesbroughCollege



@MbroCollege



WhatsApp

We are on WhatsApp!
07979 111 313

Come visit us

We hold several Open Events throughout the year, offering you an excellent opportunity to meet us, explore our facilities, and get a feel for what studying at Middlesbrough College & TTE is like.

Come along to find out about our fantastic courses, student perks, and more!

Thursday
3rd
October '24

5:00pm - 7:30pm

Wednesday
9th
October '24

5:00pm - 7:30pm

Saturday
9th
November '24

9:30am - 12noon

Thursday
5th
December '24

5:00pm - 7:00pm

Wednesday
22nd
January '25

5:00pm - 7:00pm

Apprenticeship
Expo
Wednesday 5th
February '25

2:00pm - 6:00pm

Wednesday
12th
March '25

5:00pm - 7:00pm

Thursday
1st
May '25

5:00pm - 7:00pm

Get That
Apprenticeship
Thursday
5th June '25

4:00pm - 7:00pm

Thursday
19th
June '25

5:00pm - 6:30pm

Not sure what you want to study?

Our Open Events are a great chance to explore our courses and discover what excites you!

You can also speak with our friendly tutors who are experts in their subject areas and are always happy to chat with you about courses you might be interested in.